

Constellations



IMOGEN MEIJHUIS

Constellations

The Nest, Lichfield
Directed by Richard Poynton

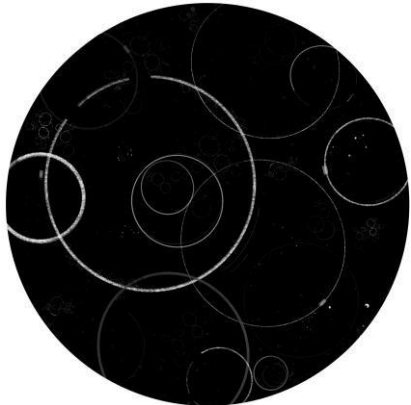


Constellations

The Nest, Lichfield
Directed by Richard Poynton



Jose Lerma

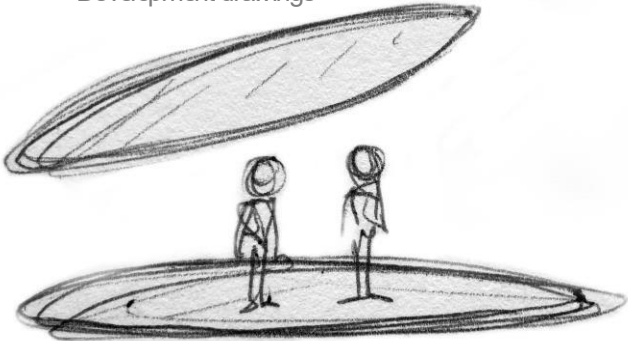


Floor design

Nocturne in Black and Gold
James Abbott McNeil Whistler



Development drawings



Roland



Marianne

Not The Last



IMOGEN MELHUIISH

Not The Last

The MAC, Birmingham
Directed by Jen Davis



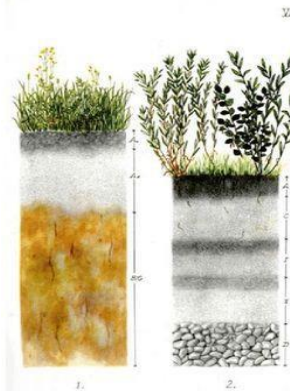
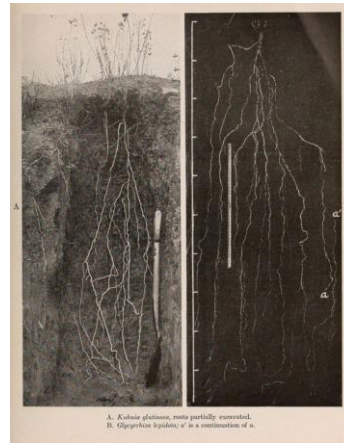
Not The Last

The MAC, Birmingham
Directed by Jen Davis



Not The Last

The MAC, Birmingham
Directed by Jen Davis



Deena



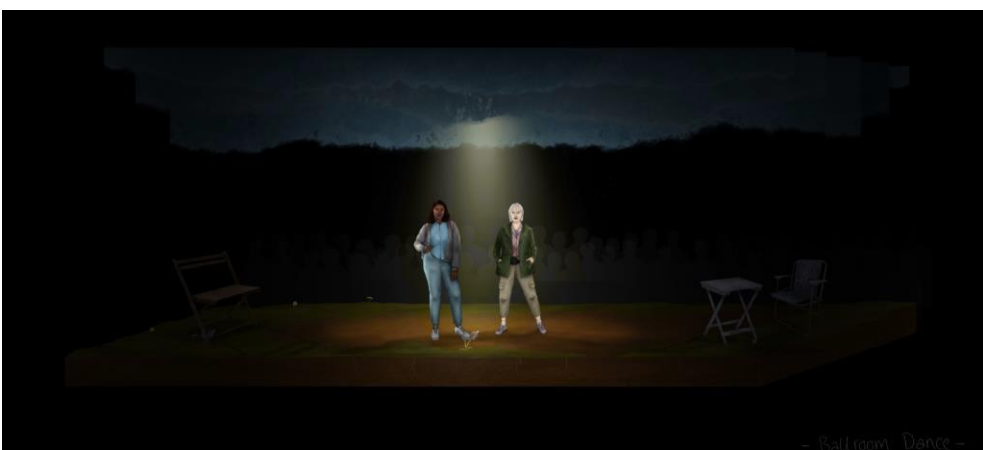
Raina

Patterns from the World
Underneath by John
Ernest Weaver (1919)

Unknown

Costume
Drawings

Final digital
drawings



Ballroom Dance

Lord of the Flies



IMOGEN MELHUISSH

Lord of the Flies

Woodhouse Farm, Whittington
Directed by Christopher Buckle



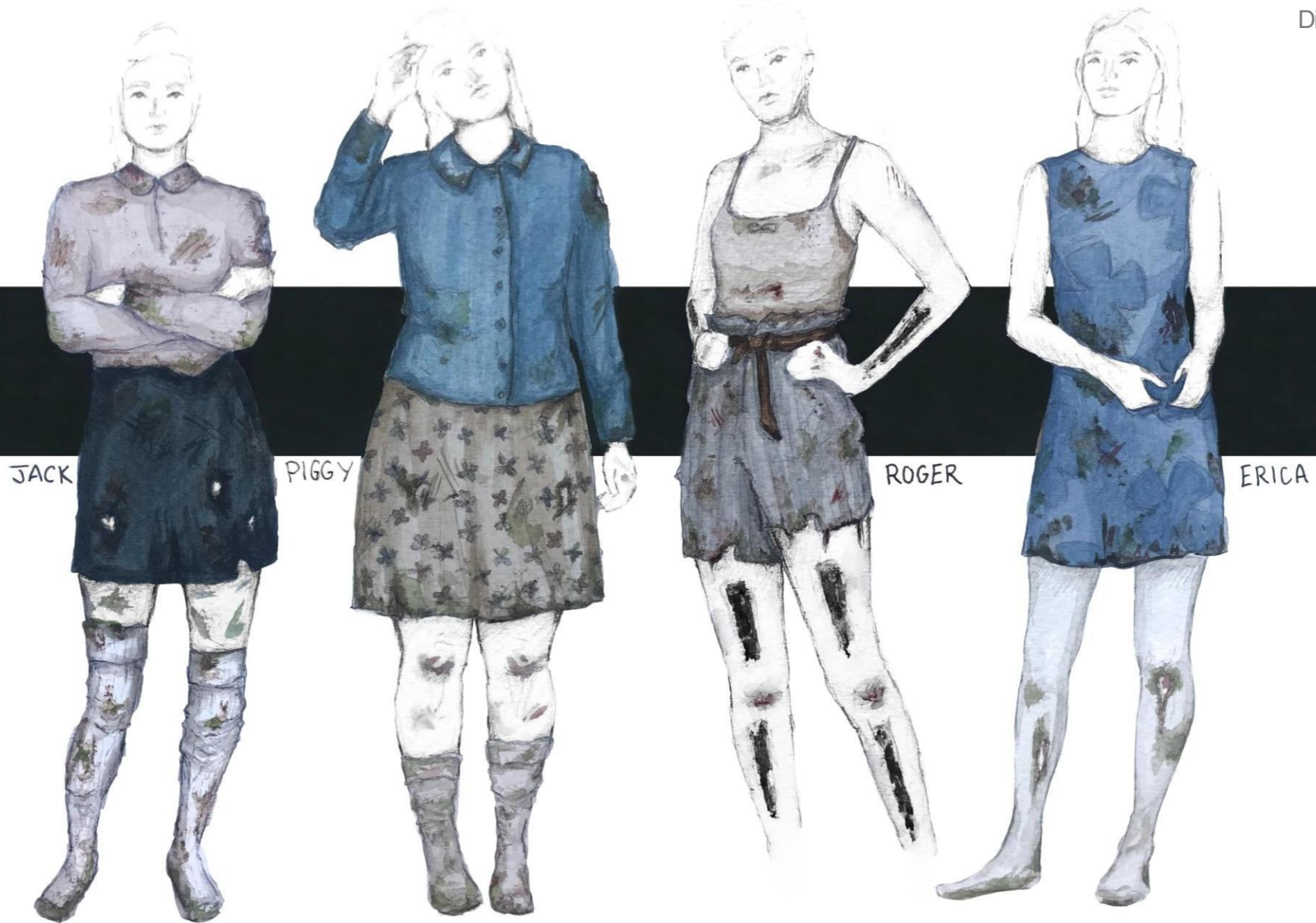
Lord of the Flies

Woodhouse Farm, Whittington
Directed by Christopher Buckle



Lord of the Flies

Woodhouse Farm, Whittington
Directed by Christopher Buckle



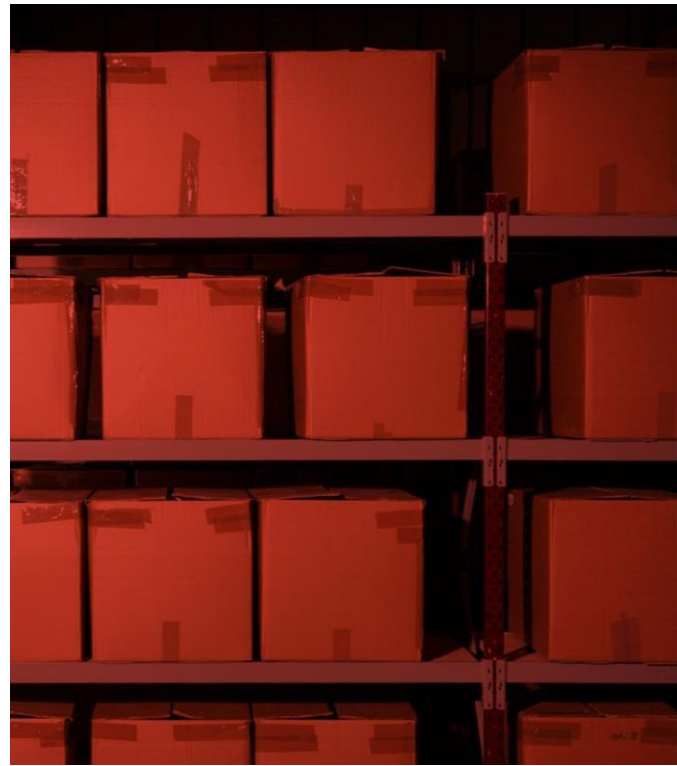
Lord of the Flies

Woodhouse Farm, Whittington
Directed by Christopher Buckle

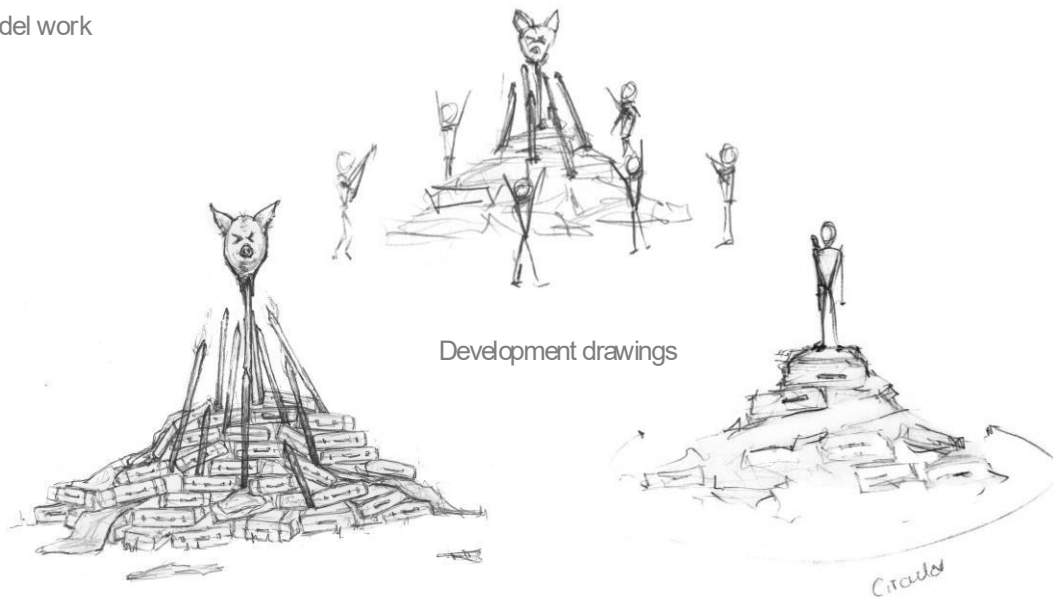


Wilts and Gloucestershire Standard

The Man Who Cleans Up
After Plane Crashes
Harry Mitchell



Model work



Development drawings

Cradle



Once: The Musical

The Hub, Lichfield
Directed by Christopher Buckle



Once: The Musical

The Hub, Lichfield
Directed by Christopher Buckle

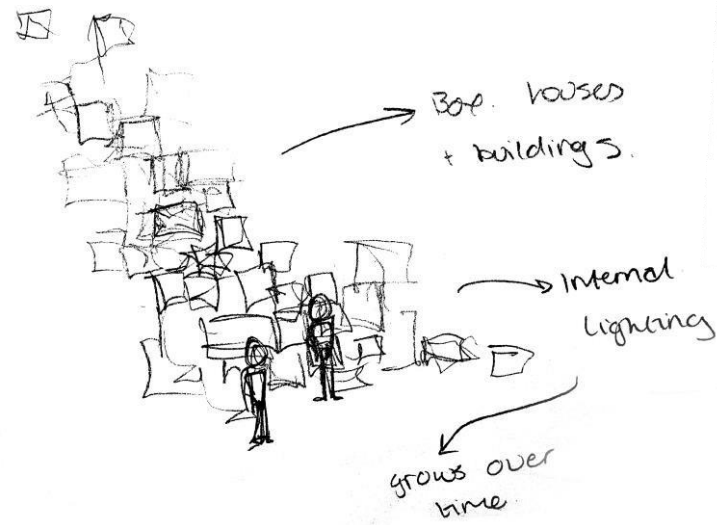


Once: The Musical

The Hub, Lichfield
Directed by Christopher Buckle



Development drawings



Art.5400,
Evd, 2009.

Political Mother: The
Choreographer's Cut,
Hofesh Shechter, Brixton
Academy, 2015.



Hey Diddle Diddle

IMOGEN MELHUIISH



Hey Diddle Diddle

Northern Stage 3, Newcastle
Directed by Bob Nicholson



Hey Diddle Diddle

Northern Stage 3, Newcastle
Directed by Bob Nicholson





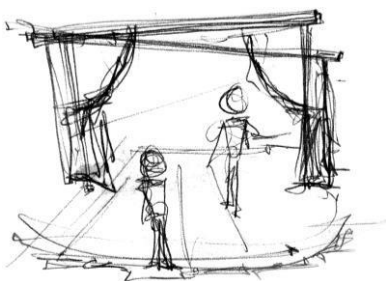
Brigitte Helm, Metropolis, Fritz Lang, 1927.

Joel Grey, Cabaret, 1972.

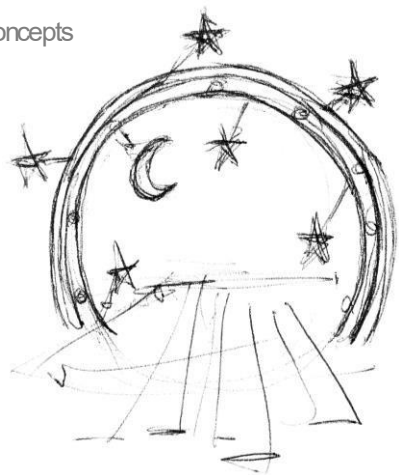


Hey Diddle Diddle

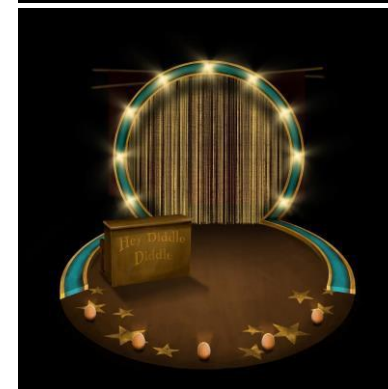
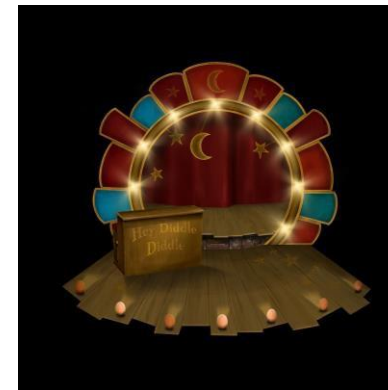
Northern Stage 3, Newcastle
Directed by Bob Nicholson



Initial Concepts



Costume Drawings



Feel Me



IMOGEN MELHUIISH

Feel Me

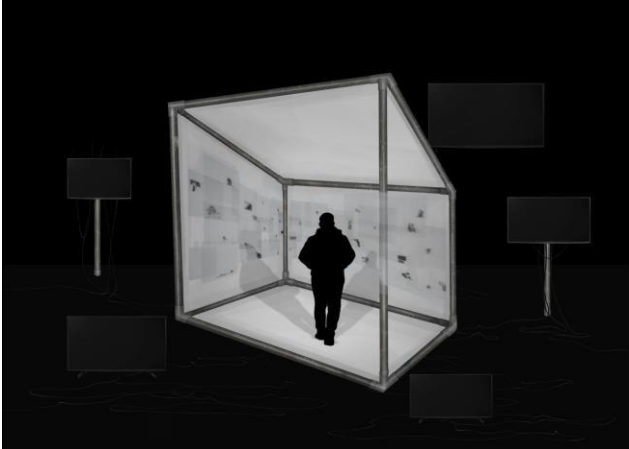
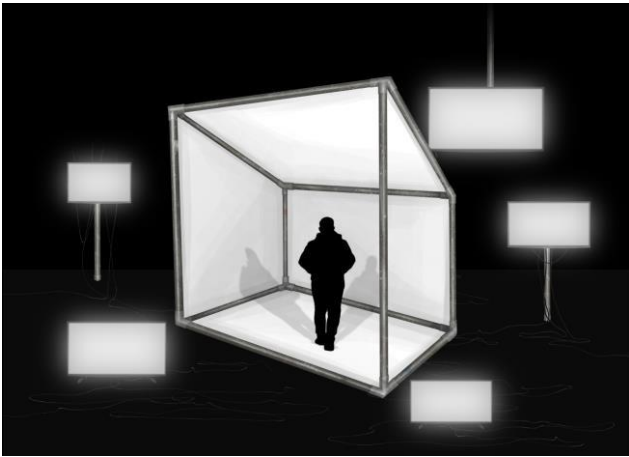
New Wolsey Theatre and UK Tour
Directed by Jemma McDonnell



Feel Me

New Wolsey Theatre and UK Tour
Directed by Jemma McDonnell

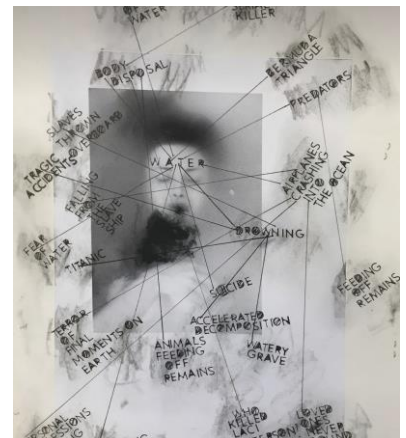
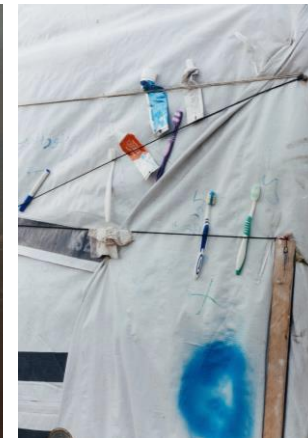




Digital
Development
Drawings

Feel Me

New Wolsey Theatre & UK Tour
Directed by Jemma McDonnell



Initial Inspiration Imagery
Alicja Dobrucka, Dwelling of a
West Bank Village.
Unknown.
The Tenderness of Harley Weir.
Wayne's Mind Map, Access to
Fashion 17/18.

Bearly There

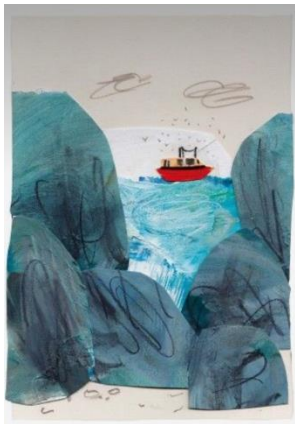
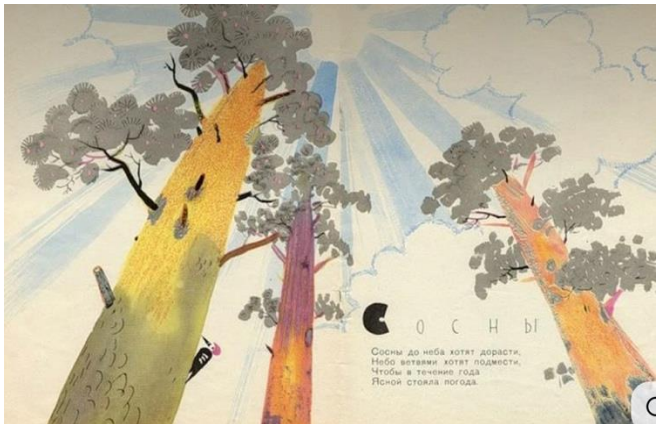


IMOGEN MELHUIISH

Bearly There

School Tour, Newcastle, Directed
by Hannah Goude-Hunter





Unknown illustration
 Caroline Pedler, Boat

Bearly There

Northern Tour, Newcastle,
 Directed by Hannah Goudie-Hunter



Final drawing



Development drawings

The Night Before Chrismouse



IMOGEN MELHUIISH

The Night Before Chrismouse

Northern Stage3, Newcastle,
Directed by Hannah Goudie-Hunter



The Night Before Chrismouse

Northern Stage 3, Newcastle,
Directed by Hannah Goudie-Hunter



The Night Before Chrismouse

Northern Stage 3, Newcastle
Directed by Hannah Goudie-Hunter



Chrismouse

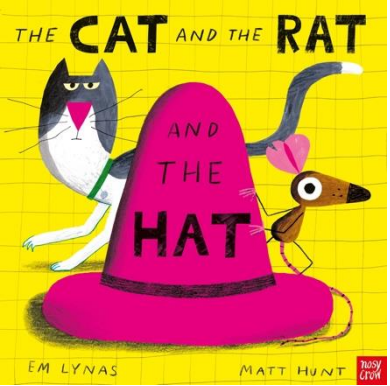


The Plan



Development drawings

Unknown
Matt Hunt illustration



Costume Development

Blackbird



IMOGEN MELHUIS I

Blackbird

Sandfields Pumping Station, Lichfield
Directed by Christopher Buckle



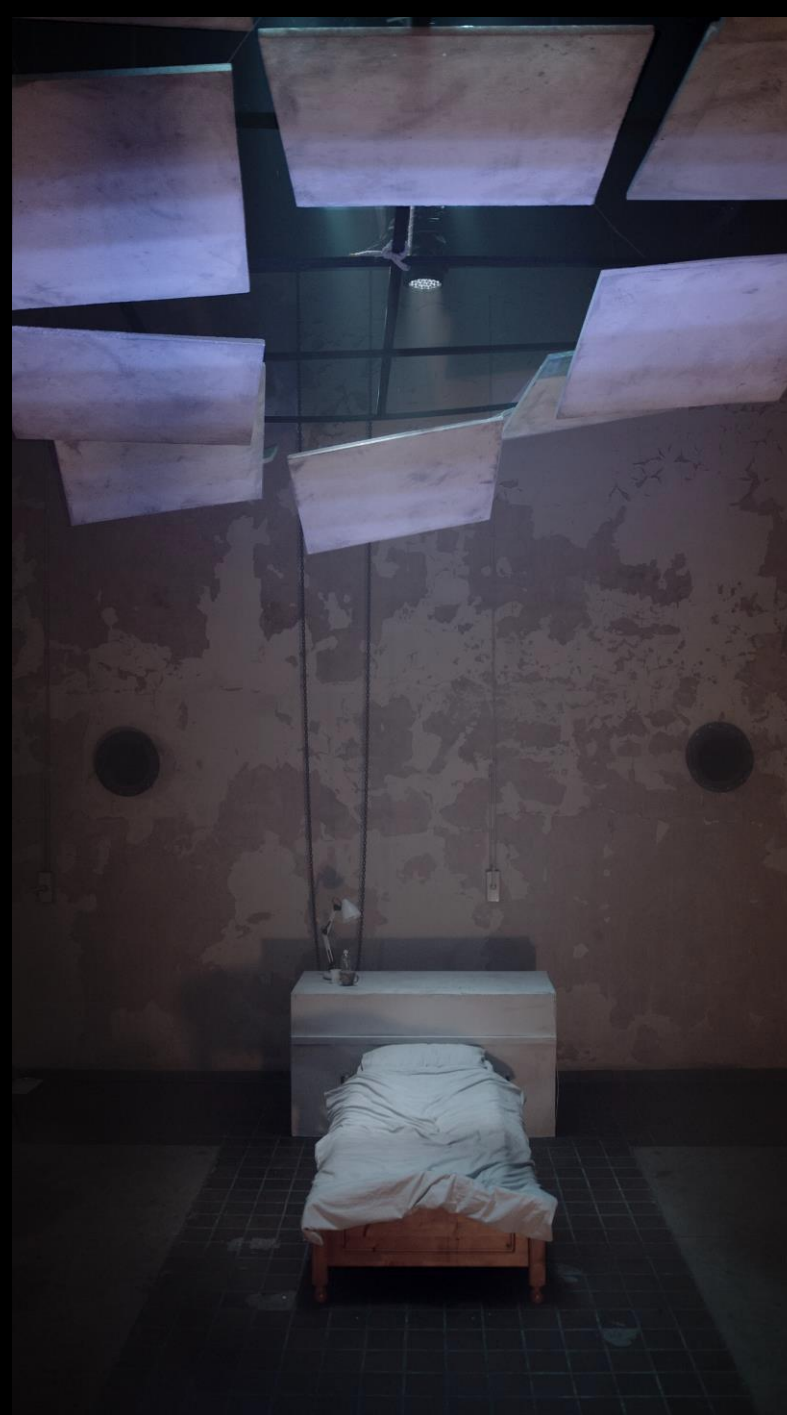
People, Places and Things

IMOGEN MELHUIISH



People, Places and Things

Sandfields Pumping Station, Lichfield
Directed by Christopher Buckle



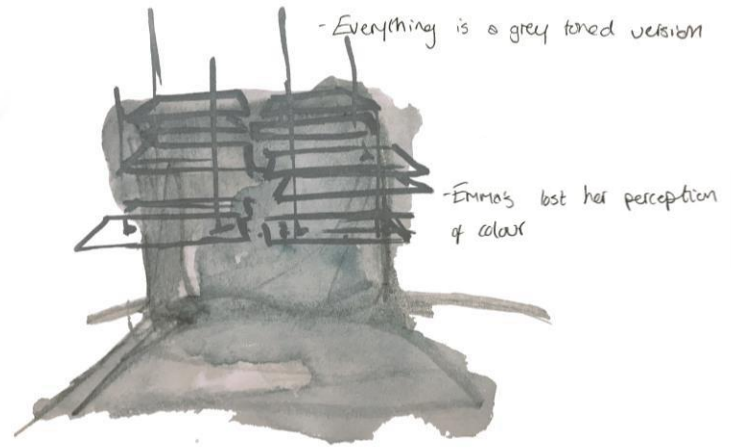
People, Places and Things

Sandfields Pumping Station, Lichfield
Directed by Christopher Buckle

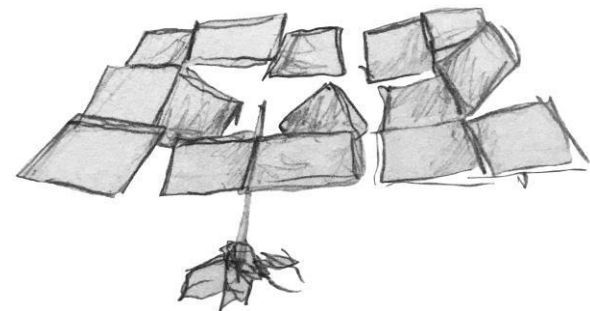


People, Places and Things

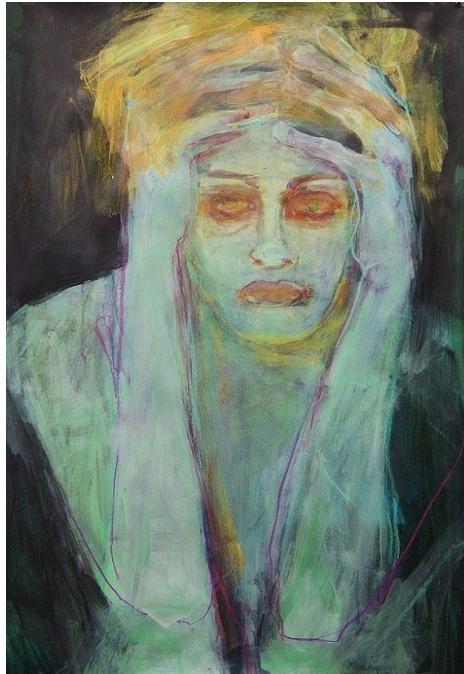
Sandfields Pumping Station, Lichfield
Directed by Christopher Buckle



Development drawings



Barbara Kröll



Pacific Northwest Ballet



Character images

Ludia



Costume sketches



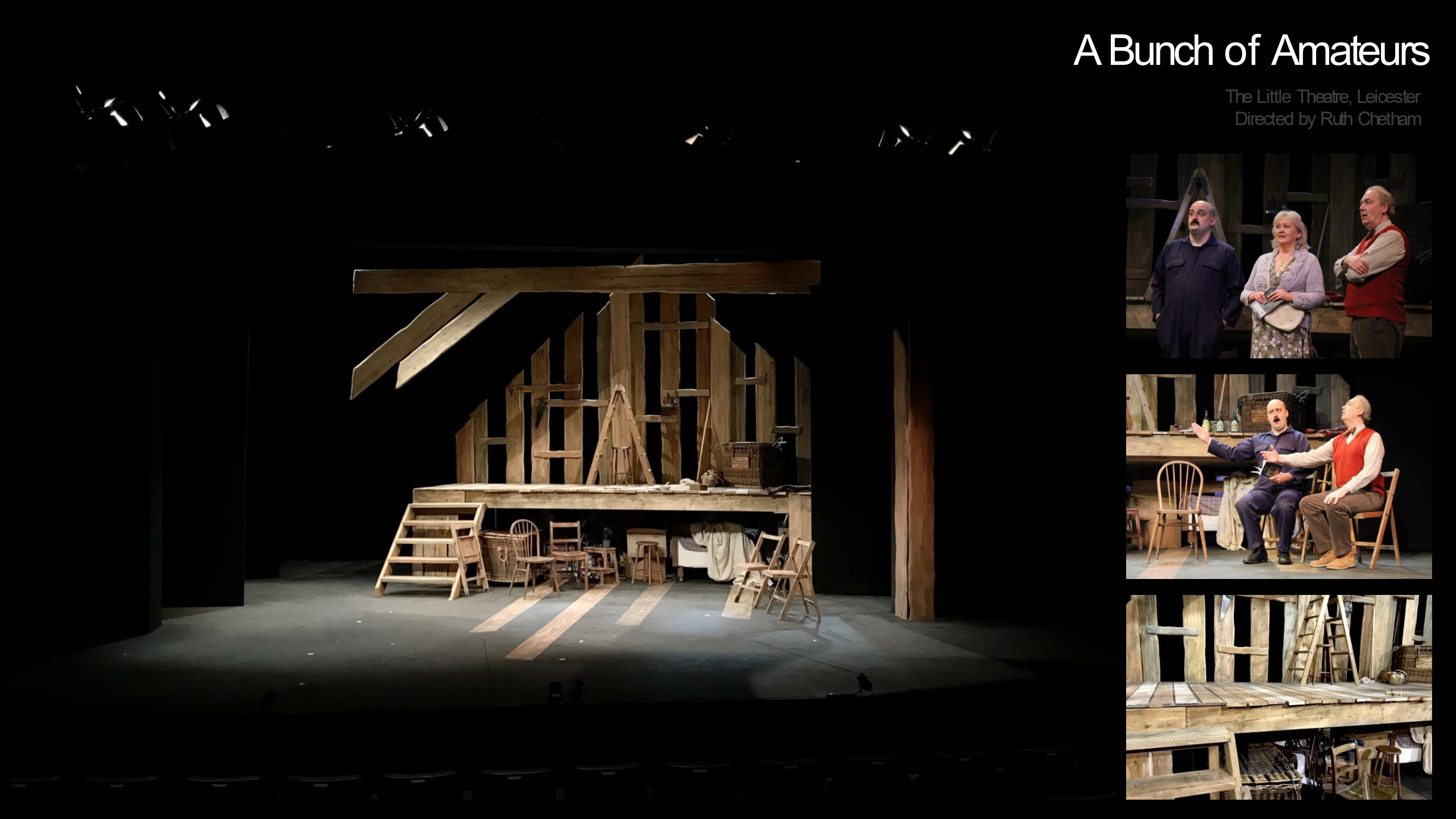
A Bunch of Amateurs



IMOGEN MELHUIISH

A Bunch of Amateurs

The Little Theatre, Leicester
Directed by Ruth Chetham





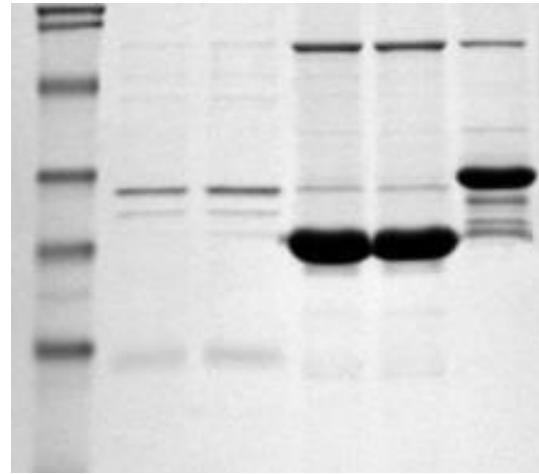
DNA

Lakeside Arts Centre
Directed by Giles Croft



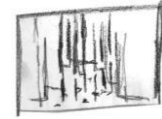
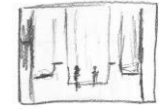
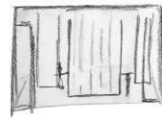
DNA

Lakeside Arts Centre
Directed by Giles Croft

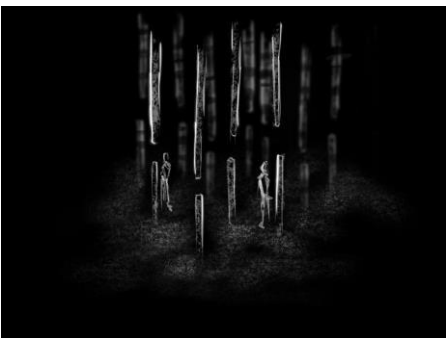
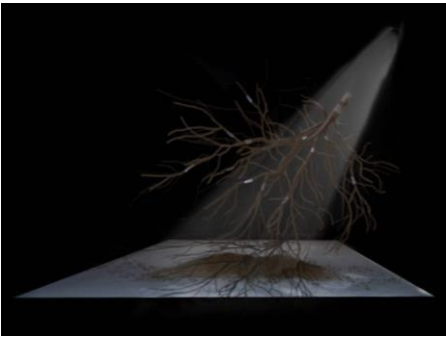


DNA
Chart

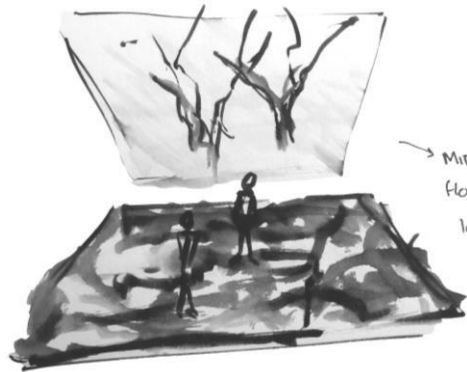
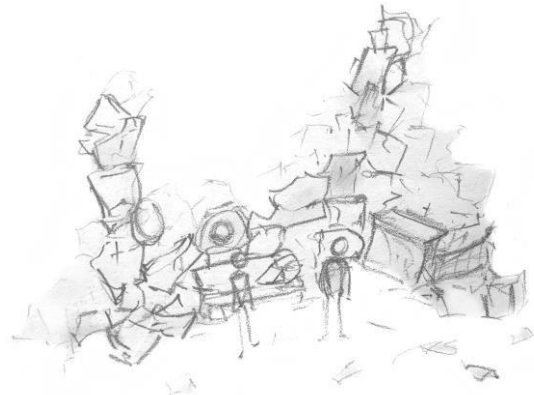
Tree, Line
Zander Olsen



Development drawings



Initial
Concepts



6 med.



KHT50 Barstools to Broadway

Kings Head Theatre, London



Boys Will Be Boys

Leeds Conservatoire
Directed by Erin Carter



IMOGEN MELHUIISH

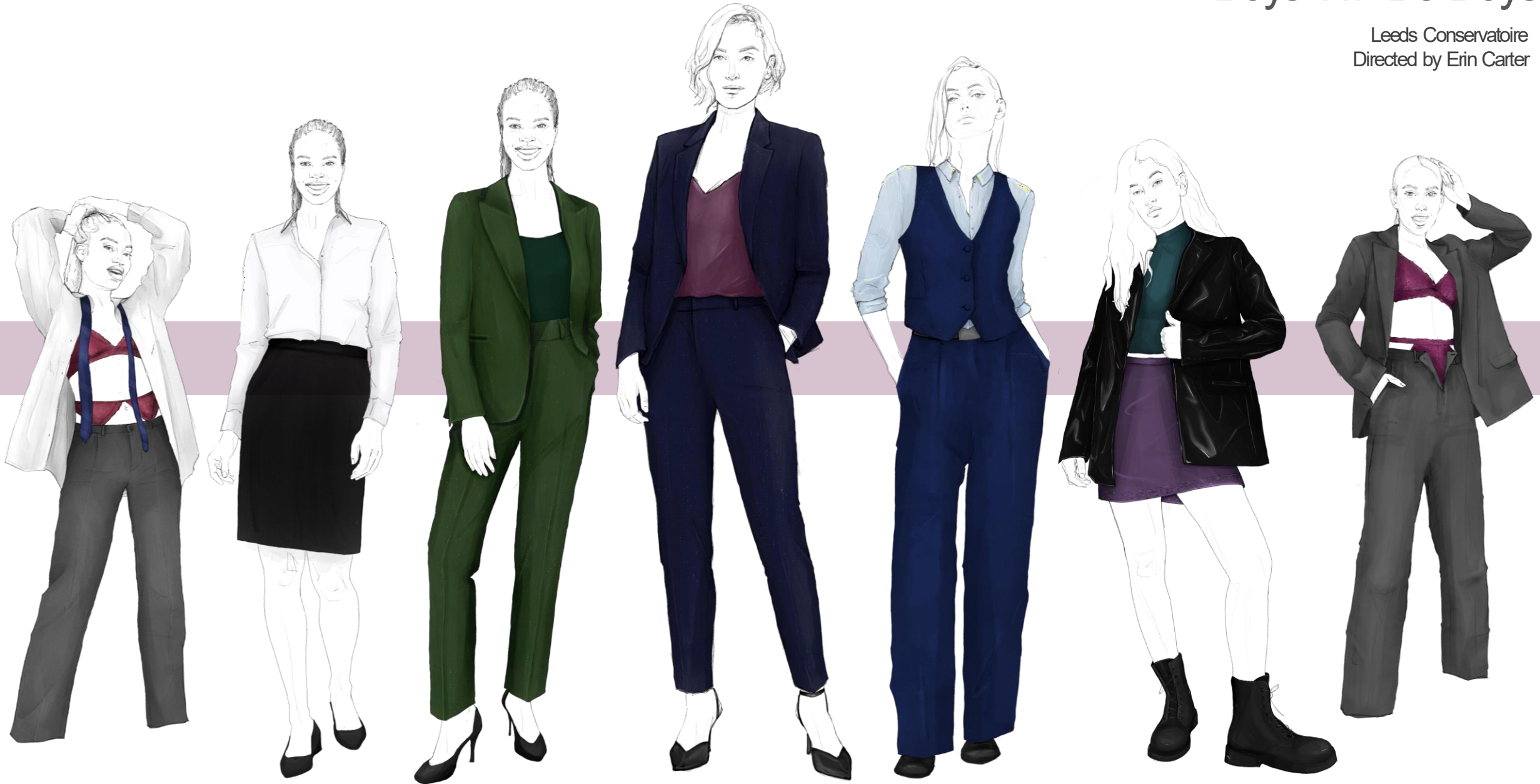
Boys Will Be Boys

Leeds Conservatoire
Directed by Erin Carter



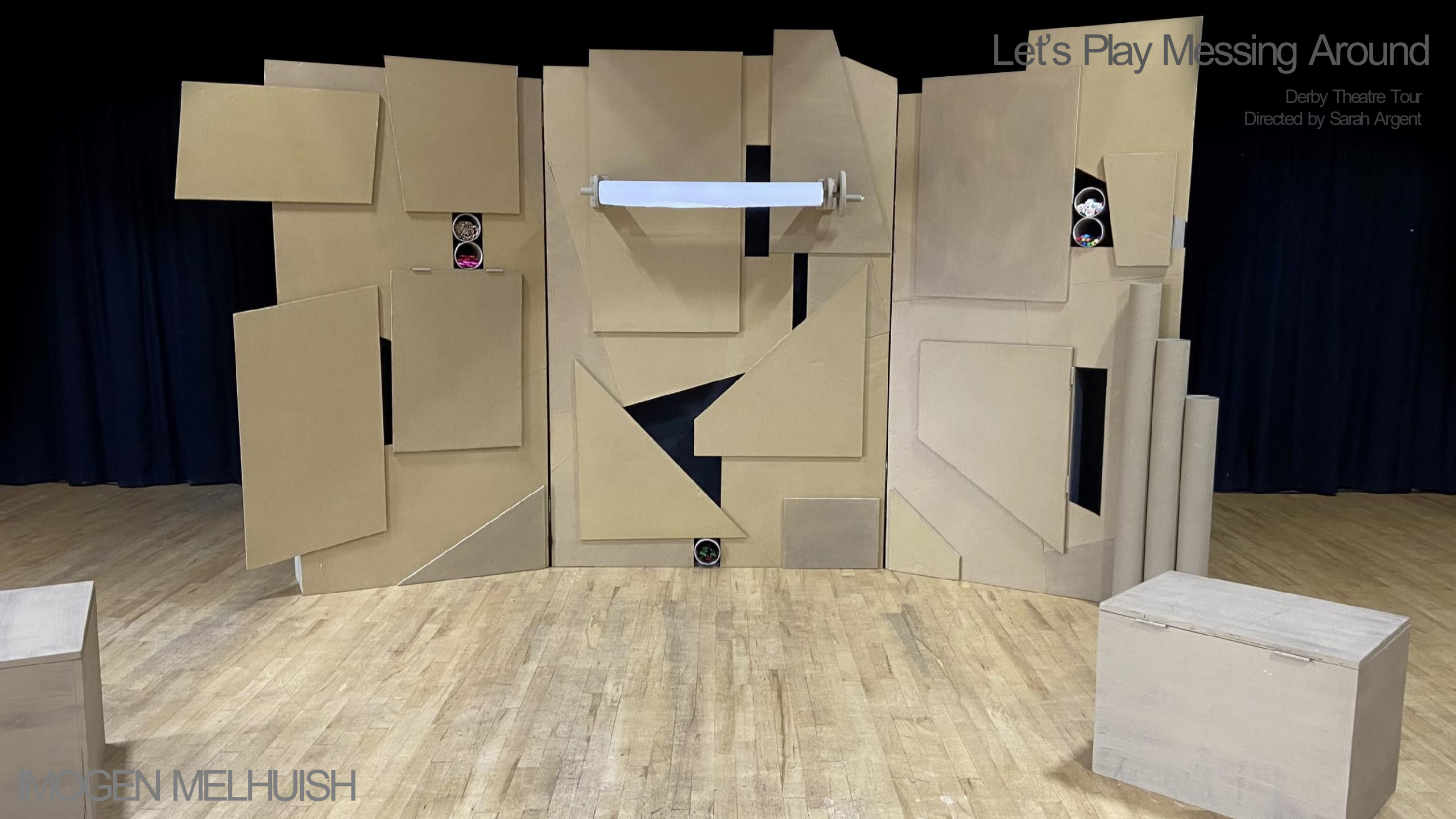
Boys Will Be Boys

Leeds Conservatoire
Directed by Erin Carter



Let's Play Messing Around

Derby Theatre Tour
Directed by Sarah Argent

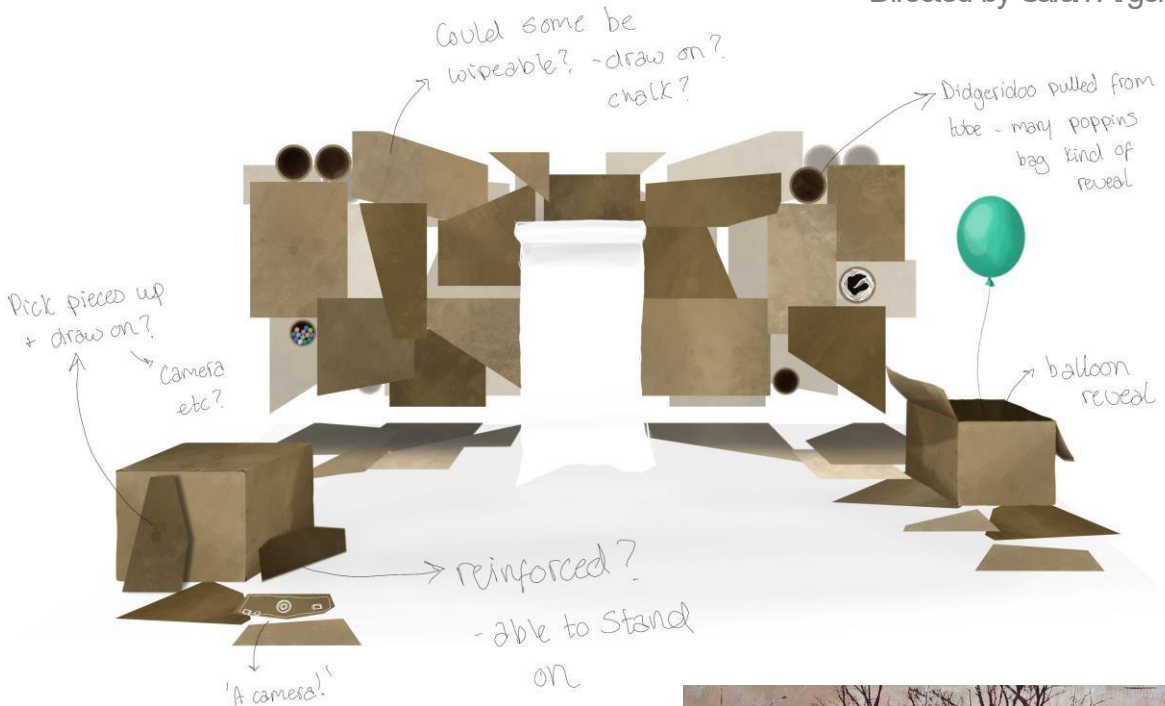


IMOGEN MELHUIISH

Let's Play Messing Around

Derby Theatre Tour
Directed by Sarah Argent

Development drawings



Model work



Let's Play Messing Around

Derby Theatre Tour
Directed by Sarah Argent



Roo



Brodie

Lemons, Lemons, Lemons,
Lemons, Lemons



Lemons, Lemons, Lemons, Lemons, Lemons

The Hub, Lichfield
Directed by Paris Hoxton



Chicago

IMOGEN MELHUSH









The Coldest of Seasons, Sara Lehtomaa



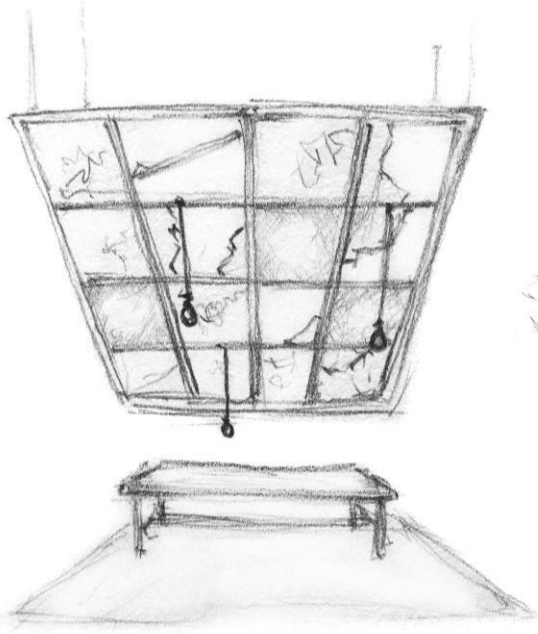
Anriemiek Kessels



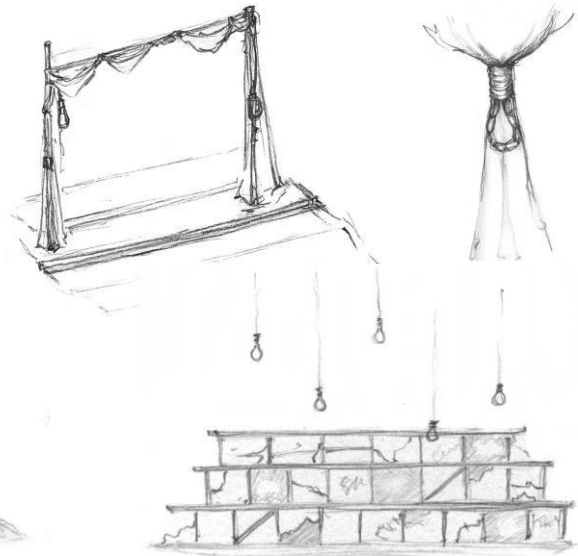
Colour
Palette

Chicago

St Mary's Hub, Lichfield
Directed by Christopher Buckle



Early concepts



Velma
Kelly



Annie

Mac/Beth

IMOGEN MELHUIISH



Mac/Beth

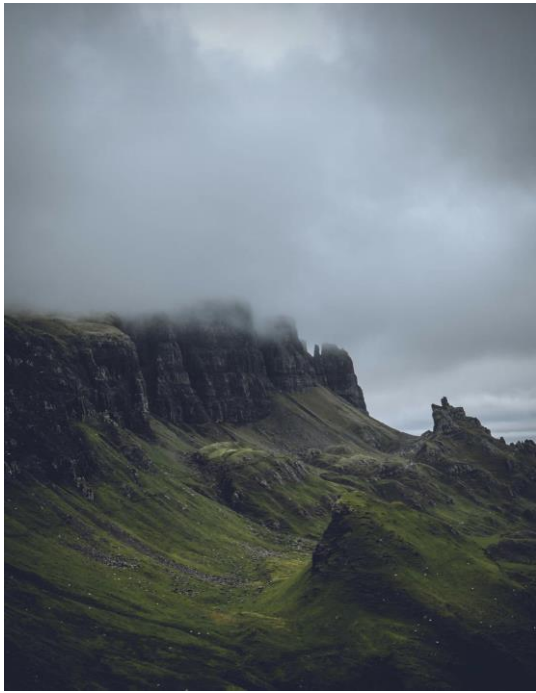
Woodhouse Farm, Whittington
Directed by Christopher Buckle



Mac/Beth

Woodhouse Farm, Whittington
Directed by Christopher Buckle





Fables #107
By Joao Ruas

Mac/Beth

Woodhouse Farm, Whittington
Directed by Christopher Buckle



Costume Drawings & Photographs



Initial Development

